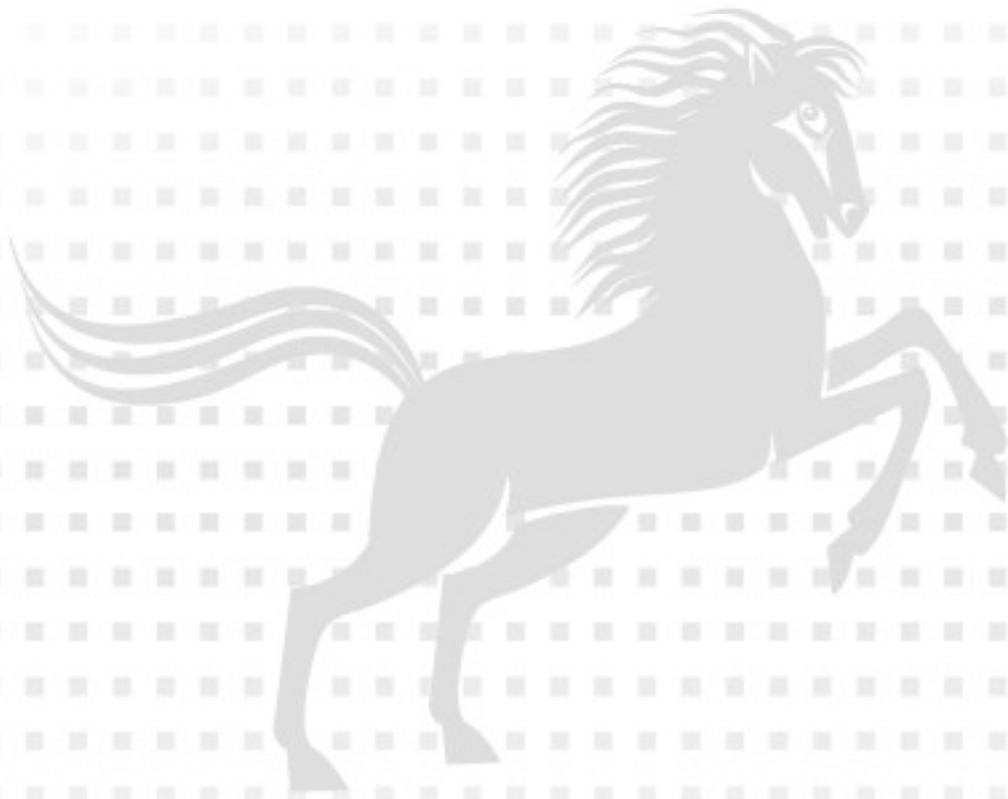


# TestHorse

Certified IT practice exam authority

---

Accurate study guides, High passing rate!  
Testhorse provides update free of charge in one year!



**Exam** : **050-694**

**Title** : Novell ZENworks 7 Desktop  
Management Administration

**Version** : DEMO

**1.Which policy package contains policies that are container specific?**

- A.User Policy Package
- B.Server Policy Package
- C.Workstation Policy Package
- D.Service Location Policy Package

**Correct:D**

**2.Referring to ZENworks Asset Management, what is the default port that Task Server uses?**

- A.997
- B.7460
- C.7461
- D.7462
- E.7465

**Correct:E**

**3.Click the Point and Click button to begin. Click on the parameter in the Myapps.html file you would edit if you want to hide the left folder view frame of the Application Browser view.**

```
<!--param name=\"SingleTree\" value=\"DA-TREE\"-->
<!--param name=\"PortalView\" value=\"false\"-->
<!--param name=\"BannerURL\" value=\"http://da1.da.com/banner.html\"-->
<!--param name=\"BannerHeight\" value=\"80\"-->
<!--param name=\"ShowTree\" value=\"true\"-->
<!--param name=\"ShowTasks\" value=\"false\"-->
<!--param name=\"AppDisplayType\" value=\"0\"-->
<!--param name=\"ShowAppFrameNavigation\" value=\"true\"-->
<!--param name=\"ShowIEToolbarButton\" value=\"true\"-->
```

**Correct:**

**4.Which policy package is used to configure the Workstation Inventory policy?**

- A.User package
- B.Server package
- C.Container package
- D.Workstation package
- E.Service Location package

**Correct:D**

**5.When installing ZENworks Desktop Management workstation agents, which information must be configured if the Novell Client is not being used to access policies and applications? (Choose 2.)**

- A.The Workstation Manager agent
- B.The Remote Management agent
- C.The HTTP port number used by the middle tier server
- D.The DNS name or IP address of the back-end server
- E.The DNS name or IP address of the middle tier server

**Correct:C E**

**6.Which object can you associate with a workstation package? (Choose 2.)**



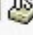
- A.User
- B.Alias
- C.Printer
- D.Profile
- E.Security

- F.Computer
- G.Container
- H.Workstation Group

**Correct:G H**

**7.Click the Point and Click button to begin. Click the option in the Distribution Rules page of this application object that will allow you to manage it in a mixed environment consisting of ZENworks 7.0 and pre-ZENworks 6.5 versions of NAL.**

Add rules to control availability of this application.

Type	Subject	Operator	Value
 Disk size	Windows Directory Drive	>=	1
AND  Disk size	C:	>=	5
AND  OS version	Windows 2000/XP	>=	5.0.x

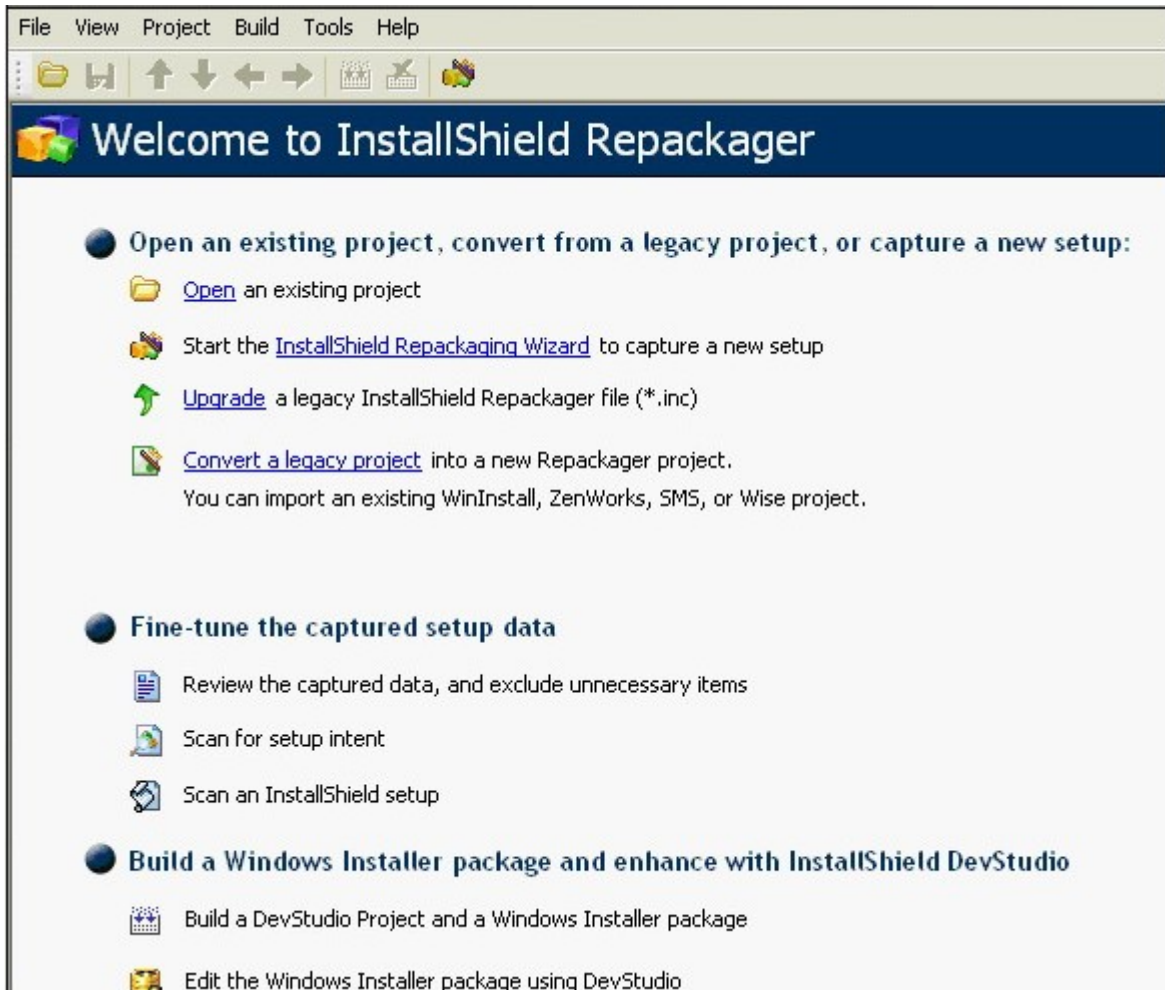
```
Disk size(Windows Directory Drive) >= 1
AND Disk size(C:) >= 5
AND OS version(Windows 2000/XP) >= 5.0.x
```

Always show icon

Legacy File Add Modify Delete

**Correct:**

**8.Click the Point and Click button to begin. Click the Repackager option you would use to covert an AOT file to an MSI package.**



**Correct:**

**9.Which DesktopDNA.exe switch configures the DNA Engine to capture a workstation's personality?**

- A./C
- B./A
- C./P
- D./U
- E./DNA
- F./APPLY
- G./UPLOAD
- H./CAPTURE

**Correct:E**

**10.In relation to ZENworks Desktop Management and disconnected Novell application launcher (NAL), what can be used to distribute applications to disconnected workstations? (Choose 2.)**

- A.CD
- B.LAN
- C.DVD
- D.USB Port
- E.Serial Port
- F.Wireless NIC

G.Firewire Port

**Correct:A C**

**11.You need to allow users the ability to uninstall a Novell application launcher (NAL) delivered application by right-clicking the application icon and selecting uninstall. What must be done to make this feature available? (Choose 2.)**

- A.An administrator must enable uninstall using a remote control agent.
- B.The user must have administrator rights to be able to uninstall the application.
- C.An administrator must enable uninstall in the properties of the application object.
- D.An administrator must enable users to perform a manual uninstall in the properties of the application object.

**Correct:C D**

**12.If you're using the Hosts file or DNS to provide host name resolution for your ZENworks Automatic Workstation Import service, what host name must you configure to resolve to your Import server's IP address?**

- A.ZWSREG
- B.ZIMPORT
- C.ZENWSREG
- D.ZWSIMPORT
- E.ZENWSIMPORT
- F.You use your Import server's host name, such as DA1 or NTI-PROVO.

**Correct:E**

**13.If you modify the myapps.html file on the Middle Tier Server, users who access the file from the server have the modified version of the myapps.html file downloaded to which directory on their Windows workstations?**

- A.C:\Program Files\Novell\Zenworks
- B.C:\Program Files\Novell\Zenworks\Nal
- C.C:\Program Files\Novell\Zenworks\Cache\Nal
- D.C:\Program Files\Novell\Zenworks\Appbrowser
- E.C:\Program Files\Novell\Zenworks\Nls\your\_language
- F.C:\Program Files\Novell\Zenworks\Nal\your\_language

**Correct:E**

**14.Which TCP port is used by the Remote Control Listener?**

- A.390
- B.443
- C.1762
- D.2021
- E.8009
- F.8011

**Correct:C**

**15.Which type of ZENworks application can be used to deliver registry keys, INI files, text files, or icons without actually installing an application on user workstations?**

- A.MSI
- B.AOT
- C.AXT

- D.Web
- E.MST
- F.Simple

**Correct:F**

**16.You are installing ZENworks workstation agents and need functionality for distributing and managing applications to associated users. Which feature should you select during installation to obtain this functionality?**

- A.Workstation Imaging
- B.Workstation Manager
- C.Workstation Inventory
- D.Remote Management
- E.Application Management

**Correct:E**

**17.When using a Windows Group policy in a user policy package to import an Active Directory group policy containing security settings, which file are the imported settings saved in by ZENworks?**

- A.Zensec.inf
- B.Security.inf
- C.WGPsec.txt
- D.Zenpolicy.inf
- E.ZenADsec.inf
- F.Zensettings.txt

**Correct:A**

**18.Which remote management utility can you use to get realtime information about the device drivers on the controlled workstation?**

- A.Chat
- B.Diagnostics
- C.File Transfer
- D.Remote View
- E.Remote Execute

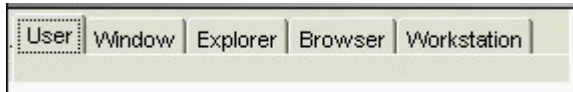
**Correct:B**

**19.User DGrow.MKT.SLC.DA is a member of the PowerUsers.SLC.DA group. You have associated a user policy package with the SLC.DA container that configures user desktops to use the Rainy Day color scheme. You've also associated a user policy package with the MKT.SLC.DA container that configures user desktops to use the Pumpkin color scheme. You've also associated a user policy package with DGrow.MKT.SLC.DA that configures user desktops to use the Maple color scheme. Finally, you've associated a user policy package with PowerUsers.SLC.DA that configures user desktops to use the Spruce color scheme. When DGrow logs in, which color scheme will be applied to her workstation?**

- A.Maple
- B.Spruce
- C.Pumpkin
- D.Rainy Day
- E.The user and the group associations are in conflict and, therefore, no color scheme will be applied.

**Correct:A**

**20.Click the Point and Click button to begin. Click on the Launcher Configuration tab you would use if you wanted to configure an icon to be displayed for Application Explorer in your workstations' system tray.**



**Correct:**