



# TestHorse

Certified IT practice exam authority

---

Accurate study guides, High passing rate!  
Testhorse provides update free of charge in one year!



<http://www.testhorse.com>

**Exam : 9L0-407**

**Title : Mac Integration Basics 10.7  
Exam**

**Version : DEMO**

## 1.HOTSPOT

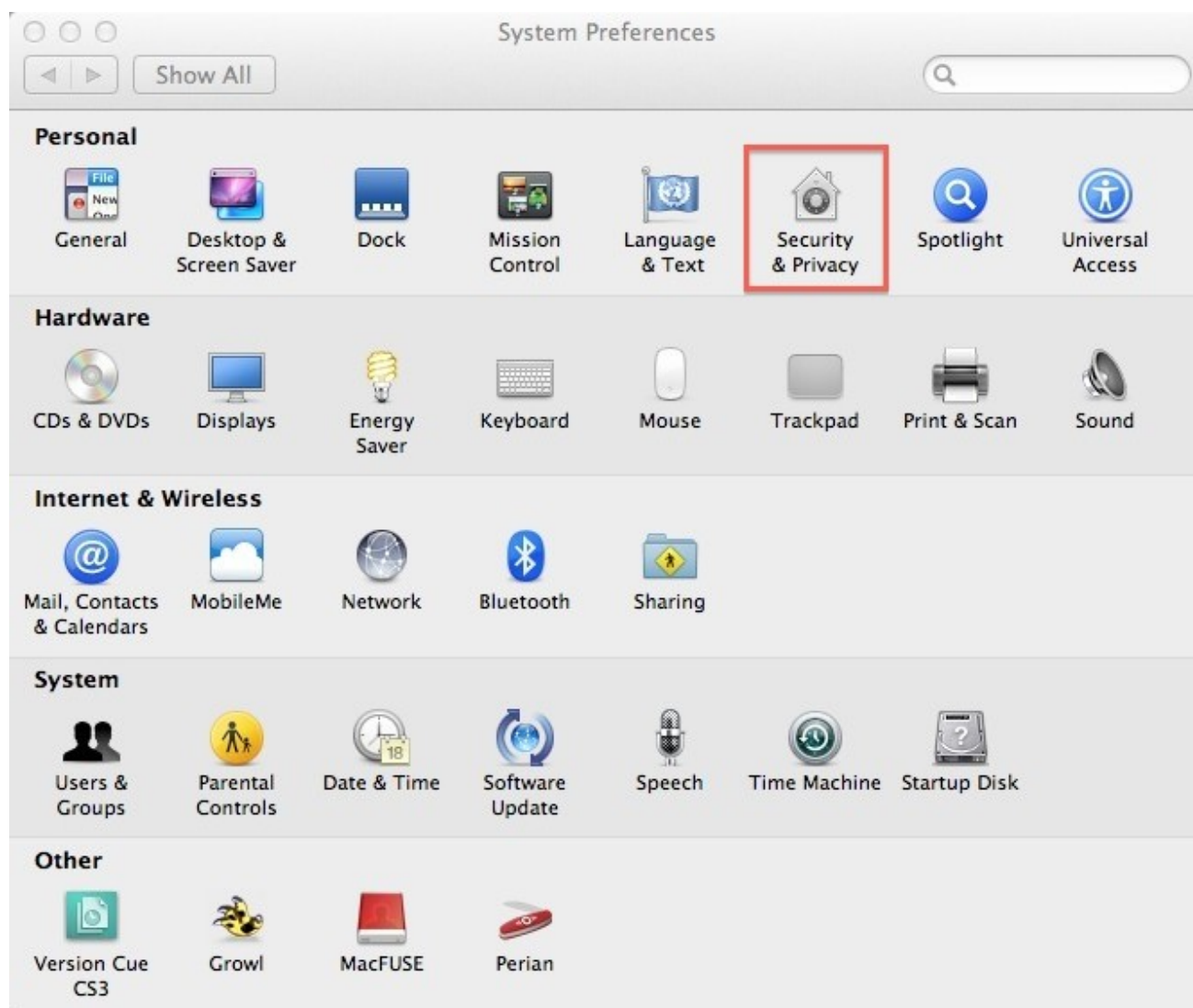
In the screenshot, click the Icon of the preference pane where you turn on the OS X personal firewall.



**Answer:**



**Explanation:**



2.What Windows Server technology provides directory and authentication services?

- A.Exchange Directory
- B.LDAP Directory
- C.Active Directory
- D.Open Directory

**Answer: C**

3.From your Mac, you want to access mail, calendars, and contacts served by a Microsoft Exchange Server.

What is the earliest version of Exchange Server for which Lion provides built-in support for this task?

- A.Microsoft Exchange Server 2003
- B.Microsoft Exchange Server 2007 with Service Pack 1 Update Rollup 4
- C.Microsoft Exchange Server 2003 with Service Pack 2
- D.Microsoft Exchange Server 2000 with Service Pack 4
- E.Microsoft Exchange Server 2010

**Answer: B**

#### 4.HOTSPOT

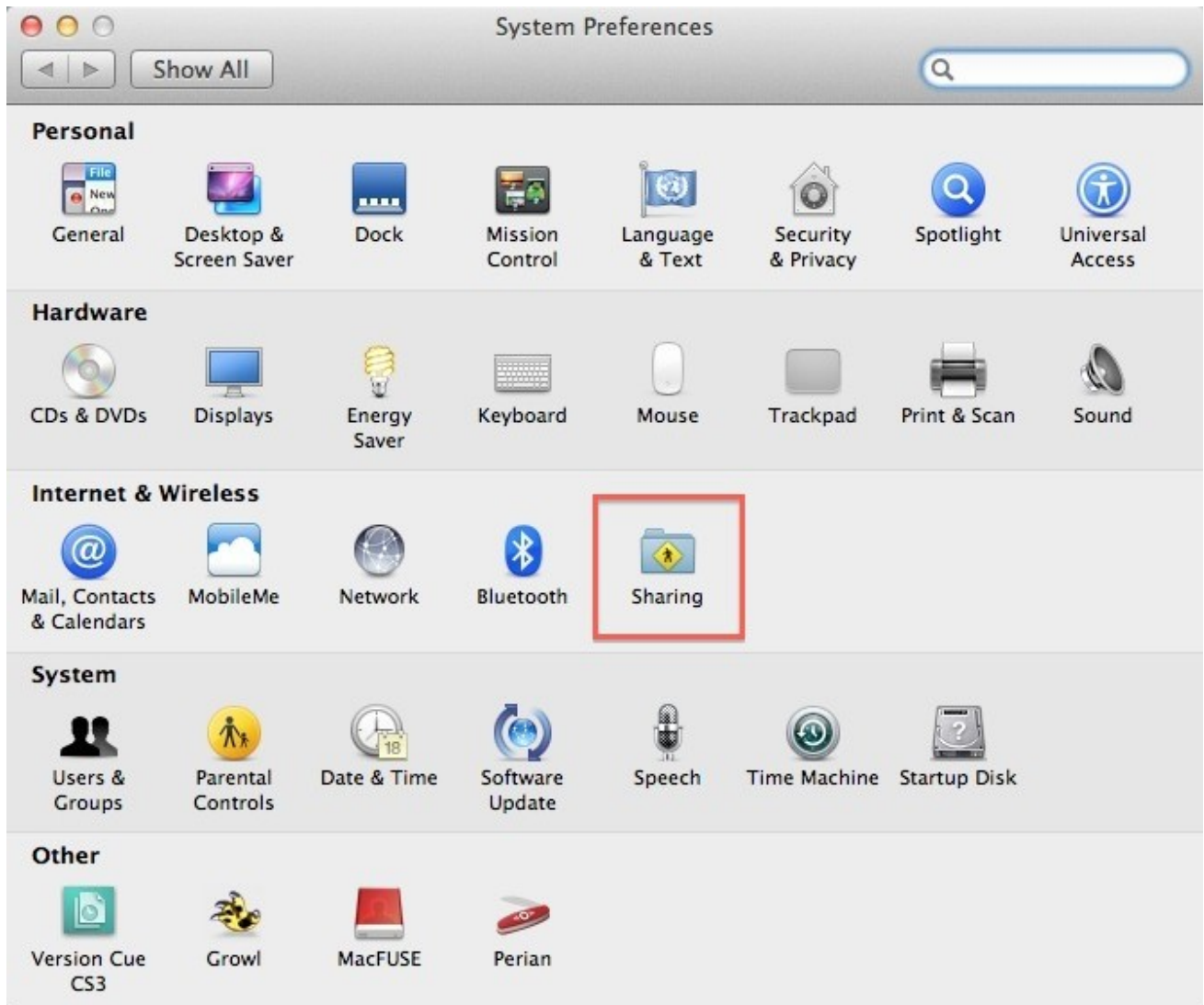
In the screenshot, click the icon of the preference pane where you configure a Mac to let Windows computers access files on the Mac using the SMB protocol.



**Answer:**



**Explanation:**



5.Which statement about iChat is true?

A.iChat can be configured to use a Google Talk account.

B.In order for a Mac user to use iChat to exchange instant messages with a Windows user, the Windows user must install iChat.

C.iChat can be configured to use a Microsoft Live Messenger account.

D.iChat requires users to have an Apple ID account.

**Answer: A**