

TestHorse

Certified IT practice exam authority

Accurate study guides, High passing rate!
Testhorse provides update free of charge in one year!



Exam : **E20-532**

Title : Networked Storage-san
specialist exam for Storage
admins

Version : DEMO

1. Which Cisco tool is used to monitor, configure and manage multiple MDS switches?

- A. Device Tools
- B. SAN Manager
- C. Fabric Manager
- D. Connectrix Manager

Answer: C

2. A customer has plugged a new host into his SAN but cannot see the HBA WWNs appear in the Topology. What are two [2] ways to resolve?

- A. Reset the switch
- B. Rediscover the switch
- C. Enable SNMP on the switches
- D. Install the Host Agent and wait for the host to be discovered

Answer: BD

3. Which database service needs to be verified if EMC VisualSAN 4.0 displays errors on program start?

- A. Oracle 8i
- B. Informix 9
- C. Sybase 11
- D. SQL Server 2000

Answer: D

4. Which two [2] management tools have SAN zoning capabilities in a McDATA environment?

- A. Connectrix Manager
- B. Fabric Control Watch
- C. Embedded Web Server
- D. Storage Virtualization Control

Answer: AC

5. From Connectrix Manager, which two [2] levels of user rights can be assigned to specific users?

- A. Fabric Administrator
- B. System Administrator
- C. Product Administrator
- D. Configuration Administrator

Answer: BC

6. Which version of HBA firmware must be used with PowerPath?

- A. Current HBA firmware
- B. Firmware shipped with HBA

- C. Latest HBA Firmware from vendor
- D. Current approved EMC HBA firmware

Answer: D

7. In the OSI 7-layer Network Model, which layer describes the cabling used to create Fibre Channel SANs?

- A. Layer 1, Physical
- B. Layer 2, Data Link
- C. Layer 3, Network
- D. Layer 6, Presentation

Answer: A

8. What is the recommended minimum amount of memory in a management station for an EMC VisualSAN 4.0 installation in a mid-sized SAN?

- A. 256 MB
- B. 512 MB
- C. 1 GB
- D. 2 GB

Answer: C

9. How many buffer-to-buffer (BB) credits can be used on ports 4-23 in a DS-24M2 switch?

- A. 5
- B. 12
- C. 24
- D. 60

Answer: A

10. Which native command on a B-series switch will provide data for EMC Customer Service?

- A. showtech
- B. supportshow
- C. supportlogs
- D. switchsupport

Answer: B

11. A new HBA is added to a Sun Solaris host. After a reconfiguration reboot, the new HBA is logged into the FA port on the Symmetrix, but it cannot see any devices. Which two [2] must be verified?

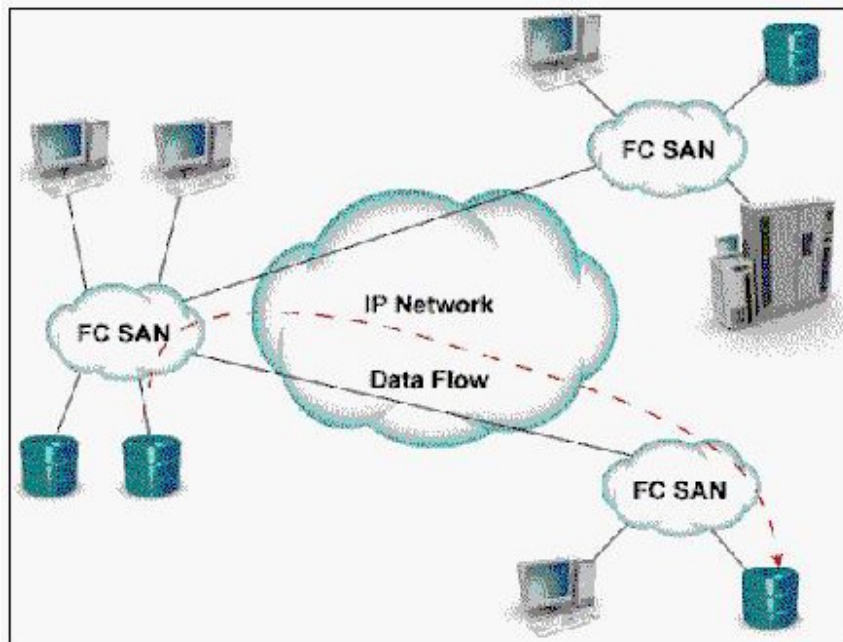
- A. Correct HBA WWN and FA association exists in the VCMDB
- B. LUN number conversion from hexadecimal to decimal in the sd.conf file
- C. LUN number conversion from decimal to hexadecimal in the sd.conf file

D. LUN number conversion from hexadecimal to decimal in HBA driver configuration file on the host

Answer: AB

12. Click the Exhibit button.

What is represented by data flow in the picture?



- A. FCIP representation of remote DR
- B. ISCSI representation of remote DR
- C. FCIP representation of remote backup
- D. ISCSI representation of remote backup

Answer: A

13. Which command is used to backup the configuration of a Brocade switch?

- A. backupConfig
- B. configUpload
- C. configDownload
- D. firmwareDownload

Answer: B

14. Which MDS-9000 director/switch is capable of supporting the emerging 10Gb bandwidth?

- A. 9140
- B. 9216
- C. 9509
- D. 9549

Answer: C

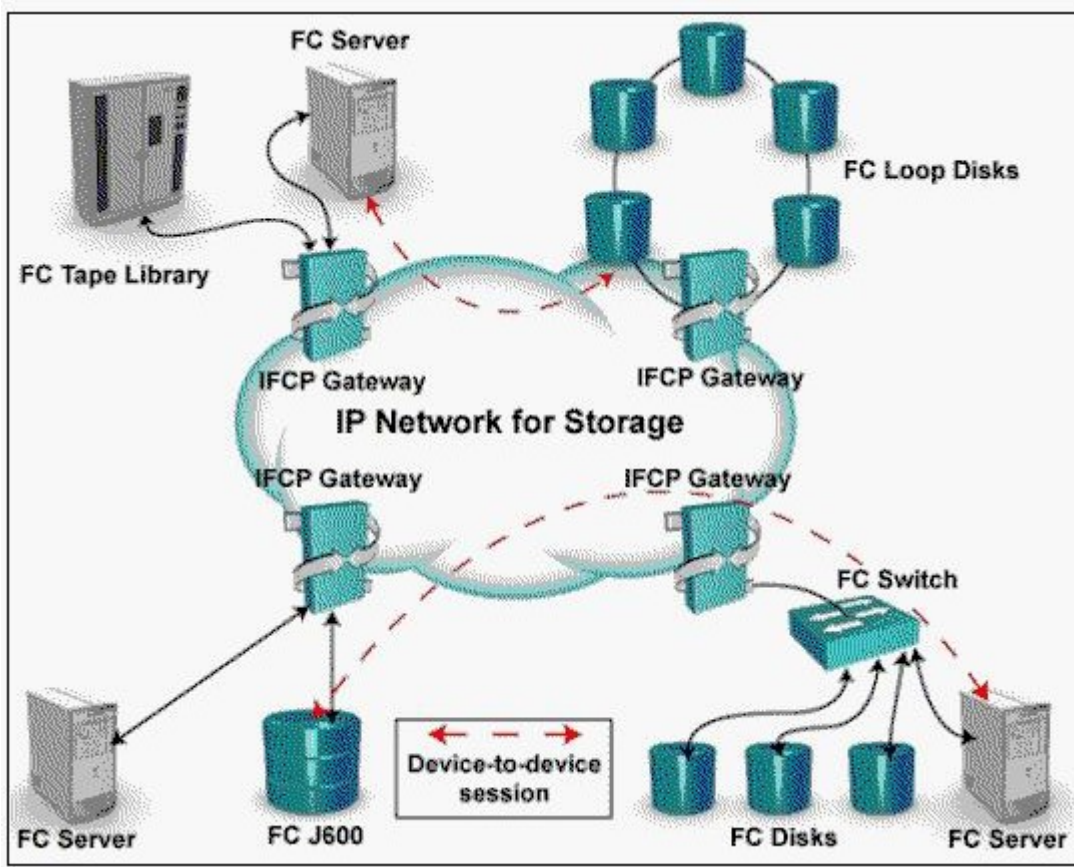
15. How many DS-32M2 switches can be mounted in a single EC-1200 cabinet?

- A. 10
- B. 12
- C. 14
- D. 16

Answer: B

16. Click the Exhibit button.

In this implementation, gateways are used to connect existing Fibre Channel devices to an IP network, and as such will include physical interfaces for which two [2] networks?



- A. IP
- B. ATM
- C. Sonet
- D. Fibre Channel

Answer: AD

17. The PowerPath command, powermt, has reported a number of devices as dead. Which commands are used to remove the dead devices?

- A. powercf check; powermt restore; powermt config
- B. powermt check; powermt restore; powermt config

- C. powermt restore; powermt check; powermt config
- D. powercf restore; powermt restore; powermt config

Answer: C

18. How many bits does a WWN contain?

- A. 16
- B. 24
- C. 32
- D. 64

Answer: D

19. How many buffer-to-buffer (BB) credits can be allocated to a port on a Brocade DS16-B2 (Brocade 3x00) series switch?

- A. 27
- B. 54
- C. 64
- D. 108

Answer: D

20. Which statement about the MDS 9000 32-port switch module is correct?

- A. Can support 16 ISLs
- B. Has a non-blocking architecture
- C. Shares 2Gb bandwidth among four ports
- D. Has more bandwidth than the 16 port module

Answer: C