

TestHorse

Certified IT practice exam authority

Accurate study guides, High passing rate!
Testhorse provides update free of charge in one year!



Exam : **FM0-307**

Title : Developer Essential for
FileMaker 12

Version : DEMO

1.DRAG DROP

Match the FileMaker Server 12 hosting technology with the maximum number of concurrent client connections.

- 50
- 100
- 200
- 250
- Unlimited

- place here IWP
- place here ODBC/JDBC
- place here Custom Web Publishing

Answer:

- 50
- 100
- 200
- 250
- Unlimited

- 100 IWP
- 50 ODBC/JDBC
- 200 Custom Web Publishing

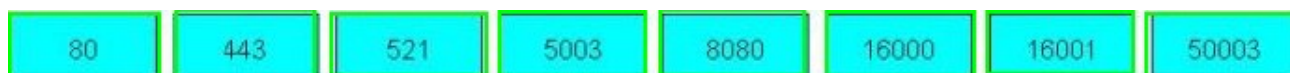
2.DRAG DROP

Identify the default ports used in FileMaker Server 12 (choices may be used more than once).

- 80
- 443
- 521
- 5003
- 8080
- 16000
- 16001
- 50003

- place here Web access (HTTP)
- place here Admin Console access
- place here FileMaker Pro 12 client access
- place here Remote Container encrypted video streaming

Answer:



443	Web access (HTTP)
16000	Admin Console access
16001	FileMaker Pro 12 client access
50003	Remote Container encrypted video streaming

3.What will a recursive custom function do when a stack limit is exceeded?

- A. returns !
- B. returns ?
- C. returns Error 1203: Unexpected end of calculation
- D. produces a spinning beach ball (Mac OS X) or a rotating cursor (Windows)

Answer: C

4.What is the maximum number of recursive calls that can be made utilizing a custom function in FileMaker Pro 12 Advanced?

- A. 10, 000
- B. 32, 000
- C. 50, 000
- D. 64, 000

Answer: C

5.What is the maximum number of files that can be hosted on FileMaker Server 12 Advanced?

- A. 100
- B. 125
- C. 250
- D. 999

Answer: B

6.What is the theoretical maximum record count in a FileMaker Pro 12 file?

- A. 100 million records
- B. 4 billion records
- C. 8 trillion records
- D. 64 quadrillion records
- E. 128 quadrillion records

Answer: D

7.DRAG DROP

Identify the default ports used in FileMaker Server 12 (choices may be used more than once).

80 443 521 5003 8080 16000 16001 50003

place here Admin Console access
place here Secure web access (HTTPS)
place here FileMaker Go 12 client access
place here Remote Container video streaming

Answer:

80 443 521 5003 8080 16000 16001 50003

16000 Admin Console access
8080 Secure web access (HTTPS)
5003 FileMaker Go 12 client access
521 Remote Container video streaming

8. Which two statements are true about field indexing in FileMaker Pro 12? (Choose two.)

- A. Calculation fields cannot be indexed.
- B. Indexing improves the speed at which sorts are performed.
- C. To establish a relationship between two fields, both fields are required to be indexed.
- D. A field must be indexed in order for Auto-complete using previously entered values to function.
- E. Minimal indexing indicates that either the value index or the word index has been created, but not both

Answer: D,E

9. Given two tables in FileMaker Pro 12 with the following fields and table occurrences:

Team Table

TeamID [Number, Serialized, Unique, Required]
PlayerID [Number]
Team_Name

Player Table

PlayerID [Number, Serialized, Unique, Required]
TeamID [Number]
Player_Name



What two methods can be used to add a portal to a layout based on the Players table, which shows only the names of the current player's teammates, but not the current player's name? (Choose two.)

- A. base the portal on the relationship Players:: Team ID = Teammates:: Team ID And use a portal filter based on the calculation Players:: PlayerID Self
- B. base the portal on the relationship Players::TeamID = Teammates::TeamID Set a sort order of PlayerID. Ascending on the relationship, and Configure the portal to have an Initial row value of 2.
- C. bases the portal on the multi-predicate relationship: Players::TeamID = Teammates::TeamID AND Players: PlayerID Teammates:: PlayerID
- D. base the portal on the relationship Players:: TeamID = Teammates:: TeamID And use a portal filter based on the calculation Players:: PlayerID Teammates:: PlayerID

Answer: C,D

10.Which statement is true about the Relationships Graph in FileMaker Pro 12?

- A. Table occurrences can represent tables from external JDBC data sources.
- B. A single Relationships Graph can include references to no more than 256 external files.
- C. A set of relationships between tables can be created as a loop if every table occurrence in the loop has a unique name.
- D. The Allow creation of records in this table via this relationship setting can be selected between two table occurrences if the relationship includes only equality (=, or) matches between fields.

Answer: D

11.Which statement is true given two FileMaker Pro 12 files, Vendors and Products, if a table from Products appears on the Vendors Relationships Graph?

- A. Scripts in Vendors can reference data from global variables defined in Products.
- B. Layouts from Products can be displayed in the same window as layouts from Vendors.
- C. Vendors can contain multiple valid external FileMaker Data Sources referencing Products.

D. A table occurrence from Products is required on the Vendors Relationships Graph in order to call a script in Products from Vendors

Answer: C

12. Which two statements are true about container fields that are configured to Store container data externally in FileMaker Pro 12? (Choose two)

- A. Container data stored externally using Secure storage is encrypted.
- B. FileMaker Pro 12 can store a maximum of 64 million external files per database file.
- C. It is possible to customize the directory location where FileMaker Pro 12 will store external container data.
- D. Once a container field has been configured to store data internally, the data must be re-imported if the field is changed to store data externally.

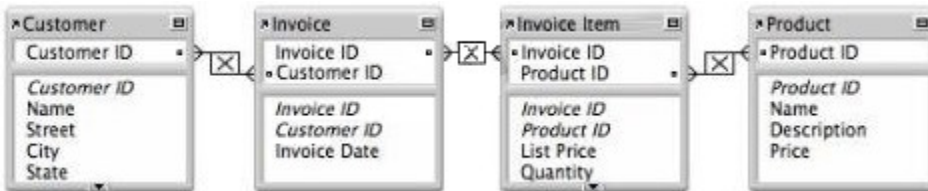
Answer: A,C

13. For which field type can the field validation setting Strict data type: Numeric Only be applied?

- A. Text
- B. Date
- C. Integer
- D. Summary
- E. Timestamp

Answer: A

14. Consider a FileMaker Pro 12 database with the following tables and fields:



Assuming only the above relationships between table occurrences, using sorting if necessary, which two actions can be performed? (Choose two.)

- A. Create a value list that shows all Invoices for a chosen Customer
- B. Create a value list on a Product layout which displays all Customers
- C. Find all of the Customers who have ever ordered a specific Product
- D. Create a portal to display each Product that has been ordered by a Customer
- E. Display all records from the Customer table in a portal on a layout for an Invoice Item record

Answer: B,E

15. Which two statements are true about FileMaker Pro 12 relationships? (Choose two.)

- A. Valid relationships can include unindexed match fields.
- B. The % (contains) operator can be used for join criteria that include one unindexed match field.
- C. When editing match fields for a relationship, no more than 16 pairs of match fields can be used.
- D. A relationship defined with an X (cross product) will only include records with non-matching match field values.
- E. A relationship defined with an X (cross product) match will allow the Delete related records in this table

when a record is deleted in the other table option.

Answer: A,E

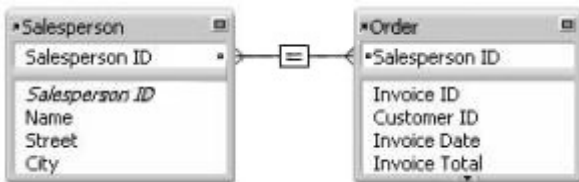
16.A text field called FirstLast in FileMaker Pro 12 is set to auto-enter the following formula: FirstName & " " & LastName FirstName and LastName are text fields in the same table. The option Do not evaluate if all referenced fields are empty is unchecked. The option Do not replace existing value of field (if any) is checked.

Under which two circumstances will the value of the calculation be inserted into the FirstLast field?
(Choose two.)

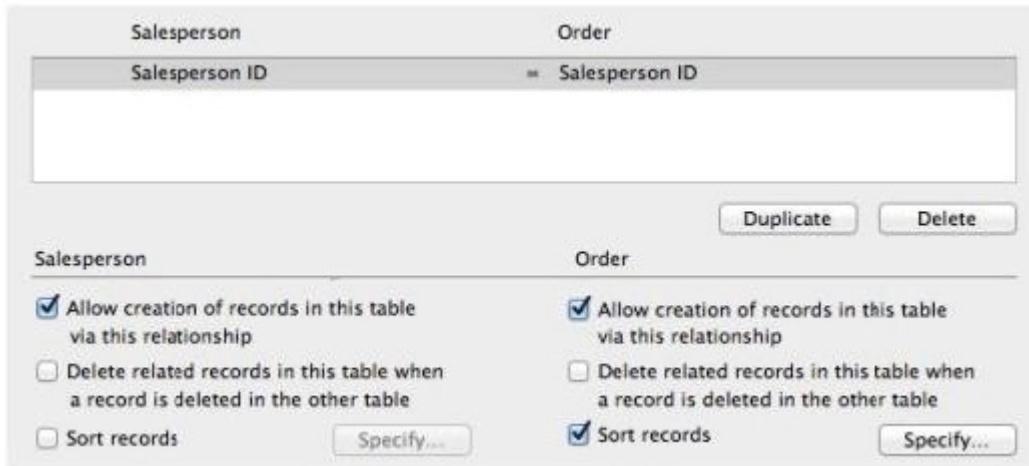
- A. a record is first created
- B. each time the value of the FirstName or LastName field is modified
- C. a user selects the menu item Records > Relookup Field Contents
- D. any field value on the record is modified and the FirstLast field is empty
- E. the FirstName or LastName field is modified and the FirstLast field is empty

Answer: A,E

17.Consider a FileMaker Pro 12 database with the following tables:



And the relationship is configured as follows:

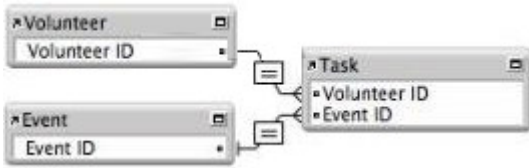


Which two statements are true about this situation? (Choose two.)

- A. It is possible to create new Salesperson records by importing data into the Order table.
- B. Users may create new Order records by entering data into a portal on a Salesperson Detail layout.
- C. A merge field can be used on layouts based on the Salesperson table occurrence to show a list of all of a salesperson's orders.
- D. Removing the sort from the Order side of the relationship will not change the way that Order records are displayed in a portal on a Salesperson Detail layout.
- E. List (Salesperson:: Salesperson ID) calculated from the context of the Order table returns a list containing the Salesperson ID for the current order.

Answer: B,E

18. Given the following relationship graph:



Without inspecting the data, what can be assumed about this database?

- A. In the Event table, the Event id has no index.
- B. For each Task record there will be exactly one related Volunteer record.
- C. Each record in the Task table will represent a unique combination of Volunteer ID and Event ID
- D. The relationship between Task and Event will not allow the Allow creation of records ... nor the Delete related records ... settings to be enabled for the Event table.

Answer: A

19. Which statement is true about supplemental fields added to a table occurrence based on an External ODBC Data Source that uses MySQL?

- A. These fields may only be of type Summary or Calculation
- B. These fields may be indexed unless they are of type Summary.
- C. These fields will be added to the table definitions within MySQL when the Sync button in the FileMaker Pro 12 Manage Database dialog is used.
- D. These fields will be lost if the schema of the MySQL table is changed and then the Sync button in the FileMaker Pro 12 Manage Database dialog is used.

Answer: A

20. A FileMaker Pro 12 database has two tables called Company and Customer. Both tables have a number field called CompanyID. The two tables have a relationship between them formed by the condition `Company:: CompanyID = Customer:: CompanyID`. Each table also has a text field called CompanyName. The CompanyName field in the Customer table is defined to Auto-enter calculated value, with the formula: `Company:: CompanyName` and the option Do not replace existing value of field unchecked.

Under which circumstances will the value of the CompanyName field on a Customer record be refreshed with data from the related Company record?

- A. any time the Customer record is modified
- B. any time the index of the Company:: CompanyID field is rebuilt
- C. any time the related Company:: CompanyName field is modified
- D. any time the CompanyID field on the Customer record is modified
- E. any time a user chooses Refresh Window from the Records menu while viewing the Customer record

Answer: D