



TestHorse

Certified IT practice exam authority

Accurate study guides, High passing rate!
Testhorse provides update free of charge in one year!



<http://www.testhorse.com>

Exam : FN0-100

Title : Foundry Networks CNE

Version : DEMO

1.Which of the following are true regarding the highest priority queue on Foundry chassis devices?

- A. qosp0 ?This queue corresponds to 802.1p prioritization levels 0 and 1 and Foundry priority levels 0 and 1.
- B. qosp0 ?This queue corresponds to 802.1p prioritization levels 6 and 7 and Foundry priority levels 6 and 7.
- C. qosp3 ?This queue corresponds to 802.1p prioritization levels 0 and 1 and Foundry priority levels 0 and 1.
- D. qosp3 ?This queue corresponds to 802.1p prioritization levels 6 and 7 and Foundry priority levels 6 and 7.

Answer: D

2.Which Foundry CLI command should be used to add an unencrypted community string?

- A. snmp-server community private rw
- B. snmp-server community 0 private rw
- C. snmp-server community 1 private rw
- D. snmp-server community clr private rw

Answer: B

3.Which routing protocol is used on the Internet to route traffic between Autonomous Systems and to maintain loop-free routing?

- A. OSPF
- B. IBGP
- C. BGP4
- D. RIP

Answer: C

4.Which Foundry SLB predictor uses a percentage distribution?

- A. round robin
- B. weighted
- C. least connections
- D. delay

Answer: B

5.The show configuration command on a Foundry device will show the running config.

- A. T
- B. F

Answer: B

6. Foundry trunking groups on L3 routers load share based on destination IP/IPX address.

- A. T
- B. F

Answer: A

7. Foundry route health injection feature supports health checks for which of the following?

- A. All TCP traffic
- B. All TCP and UDP traffic
- C. HTTP only
- D. HTTP, POP3, and SNMP

Answer: C

8. An OSPF interface configured to be passive will perform which of the following?

- A. send and receive OSPF updates
- B. receive but not forward OSPF updates
- C. will not send or receive OSPF updates
- D. will not receive but forward OSPF updates

Answer: C

9. Which broadcast and pruning multicast protocol delivers IP multicast data to its intended receivers? (Select all that apply)

- A. PIM
- B. ICMP
- C. DVMRP
- D. IGMP

Answer: A, C

10. What is the difference between TACACS+ and TACACS?

- A. TACACS is an enhancement to TACACS+
- B. TACACS is TCP based and TACACS+ is UDP based
- C. TACACS+ provides encryption and uses TCP.

Answer: C

11. Which Foundry CLI command is used to copy the system image from the secondary flash area to the primary?

- A. copy flash primary
- B. copy slot1 primary
- C. copy secondary primary
- D. copy flash flash primary

Answer: D

12.What feature allows a switch to detect and switch web traffic to a local cache server within the network?

- A. http header hashing
- B. SSL session ID switching
- C. transparent cache switching
- D. cache route optimization

Answer: C

13.Which STP bridge parameter manages the interval a bridge will wait for receipt of a hello packet before initiating a topology change?

- A. priority
- B. forward delay
- C. maximum age
- D. hello time

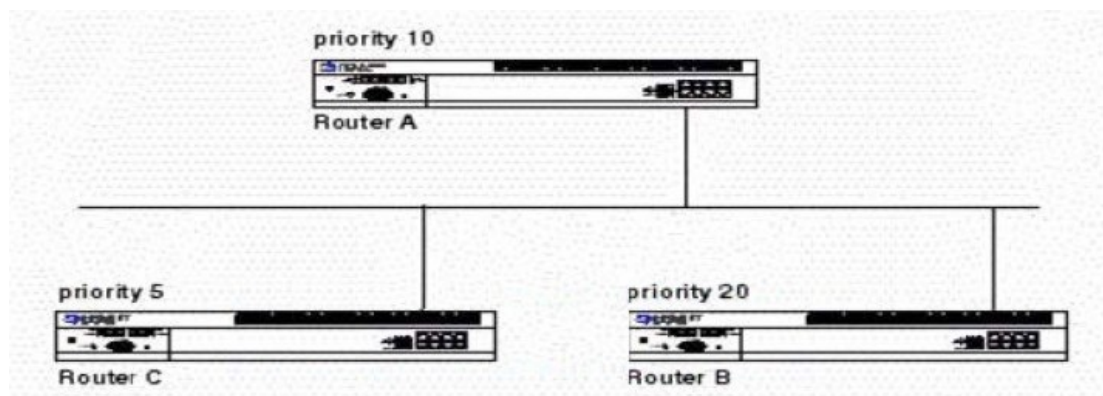
Answer: C

14.What transport layer protocol provides a connection oriented service?

- A. UDP
- B. STP
- C. TCP
- D. ARP

Answer: C

15.Exhibit:



The diagram shows an OSPF network with no designated router (DR) and no backup designated router (BDR). Which of the following statements identify which routers will be selected DR and BDR?

- A. Router C is DR, Router B is BDR
- B. Router B is DR, Router A is BDR
- C. Router B is BDR, Router A is DR
- D. Router A is DR, Router C is BDR

Answer: B

16.Which Foundry CLI command is used to provide privileged user mode?

- A. access
- B. enable
- C. super-user
- D. config t

Answer: B

17.What is the maximum hop count allowed by RIP?

- A. 15
- B. 10
- C. 255
- D. no limit

Answer: A

18.Which of the following commands will correctly configure a Foundry Layer 3 Switch to learn routes from all neighbors except 192.168.1.170?

- A. BigIron(config-rip-router)# neighbor 2 deny 192.168.1.170
- B. BigIron(config-rip-router)# neighbor 1024 permit any BigIron(config-rip-router)# neighbor 2 deny 192.168.1.170
- C. BigIron(config-rip-router)# neighbor deny 192.168.1.170 BigIron(config-rip-router)# neighbor 1024 permit any
- D. BigIron(config-rip-router)# neighbor 2 deny 192.168.1.170 BigIron(config-rip-router)# neighbor 1024 permit any

Answer: D

19.The appletalk echo protocol (AEP) is equivalent to which IP protocol?

- A. UDP
- B. TCP
- C. ARP
- D. ICMP

Answer: D

20.What does a Foundry ACL ID identify?

- A. An ACL as standard or extended
- B. Number of entries.
- C. A collection of individual ACL entries

Answer: C