



# TestHorse

Certified IT practice exam authority

---

Accurate study guides, High passing rate!  
Testhorse provides update free of charge in one year!



<http://www.testhorse.com>

**Exam : HP0-M34**

**Title : HP Server Automation 9.x.  
Software**

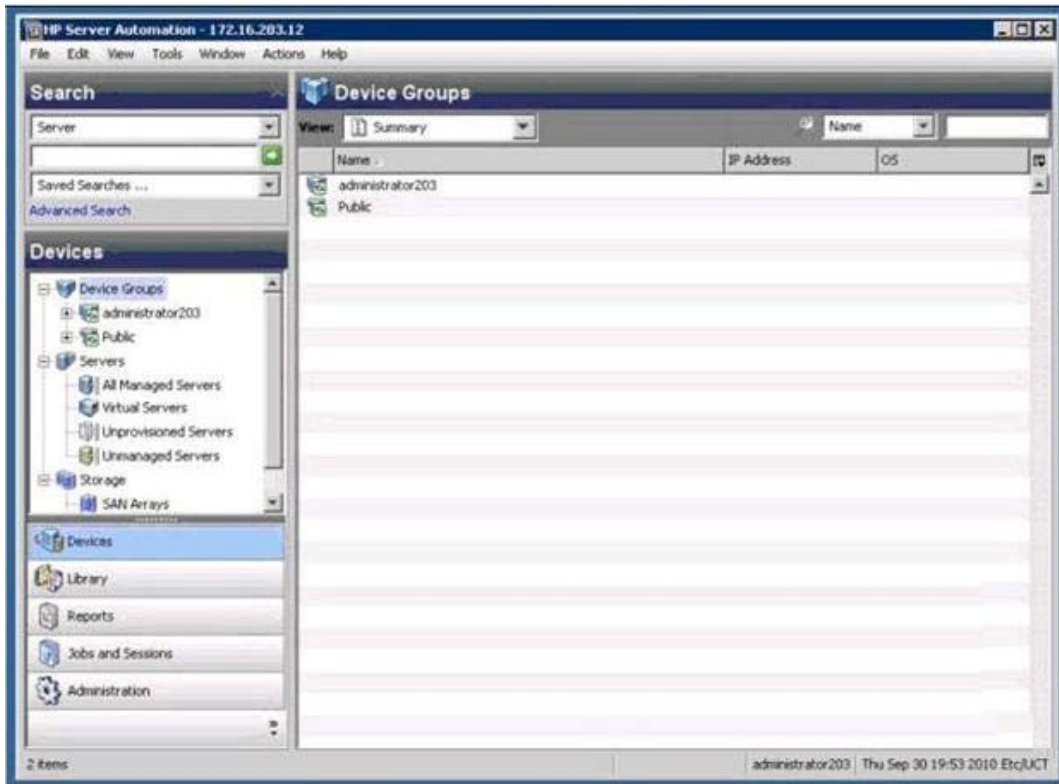
**Version : Demo**

1.Which type of architecture does the term Multimaster Mesh describe?

- A. the core component bundles distributed on multiple servers
- B. multiple, coordinated Server Automation cores distributed across the network
- C. multiple satellite servers configured to fail over to a single core
- D. a core server running on multiple cluster nodes distributed across the network

Answer: B

2.Click the Exhibit button.



Which user interface is shown in the exhibit?

- A. HP Server Automation Web Client
- B. HP Server Automation Global Shell Client
- C. HP Server Automation Infrastructure Client
- D. HP Server Automation Client

Answer: D

3.How do the core and the agent communicate?

- A. SA bus
- B. Global Shell
- C. SSL tunnel
- D. SSH tunnel

Answer: C

4.Which Application Deployment Manager application components require explicit rollback and undeploy instructions for removal?

- A. code components

- B. application configurations
- C. packages from the Server Automation library
- D. Operations Orchestration flows

Answer: D

5.The agent communications test can only be run from which HP Server Automation component?

- A. SA Client
- B. SA Web Client
- C. Global Shell
- D. Core CLI

Answer: B