



TestHorse

Certified IT practice exam authority

Accurate study guides, High passing rate!
Testhorse provides update free of charge in one year!



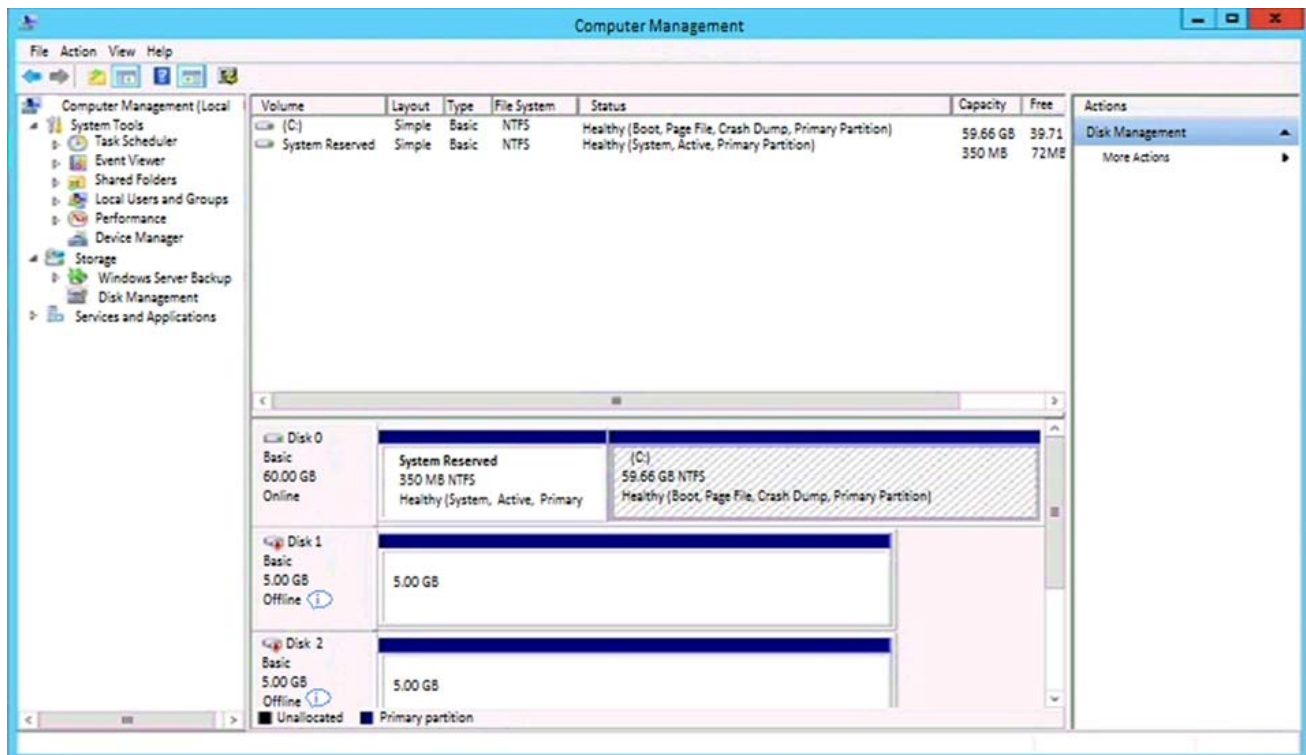
<http://www.testhorse.com>

Exam : HPE0-J50

**Title : Integrating Protected HPE
Storage Solutions**

Version : DEMO

1.Refer to the exhibit.



The administrator has presented an HPE 3PAR StoreServer virtual volume to a server. A single virtual volume is seen as two different offline disks on a Windows 2012 R2 server.

What must be done to correct the issue?

- A. Install HPE 3PAR DSM MPIO and reboot the server.
- B. Install the latest HBA driver and reboot the server.
- C. Install the MPIO feature and reboot the server.
- D. Install 3PAR host explorer and start service.

Answer: A

Explanation:

Reference: <https://assets.ext.hpe.com/is/content/hpedam/documents/4aa5-5000-5999/4aa5-5894/4aa5-5894enw.pdf> (21)

2.A customer with an HPE 3PAR 8200 unit has concerns about tracking missing updates and where to find the information on when upgrades were done in the past. With previous storage systems the customer ran out of storage before knowing that they needed to order more storage.

What can the integrator do to help the customer with these concerns?

- A. Use the 3PAR Service Processor for Insplore event notification.
- B. Enable StoreFront Remote integration.
- C. Schedule SSMC Overview reports for the customer.
- D. Link the 3PAR Service Agreement ID to customer's HPE passport account for storage reporting.

Answer: C

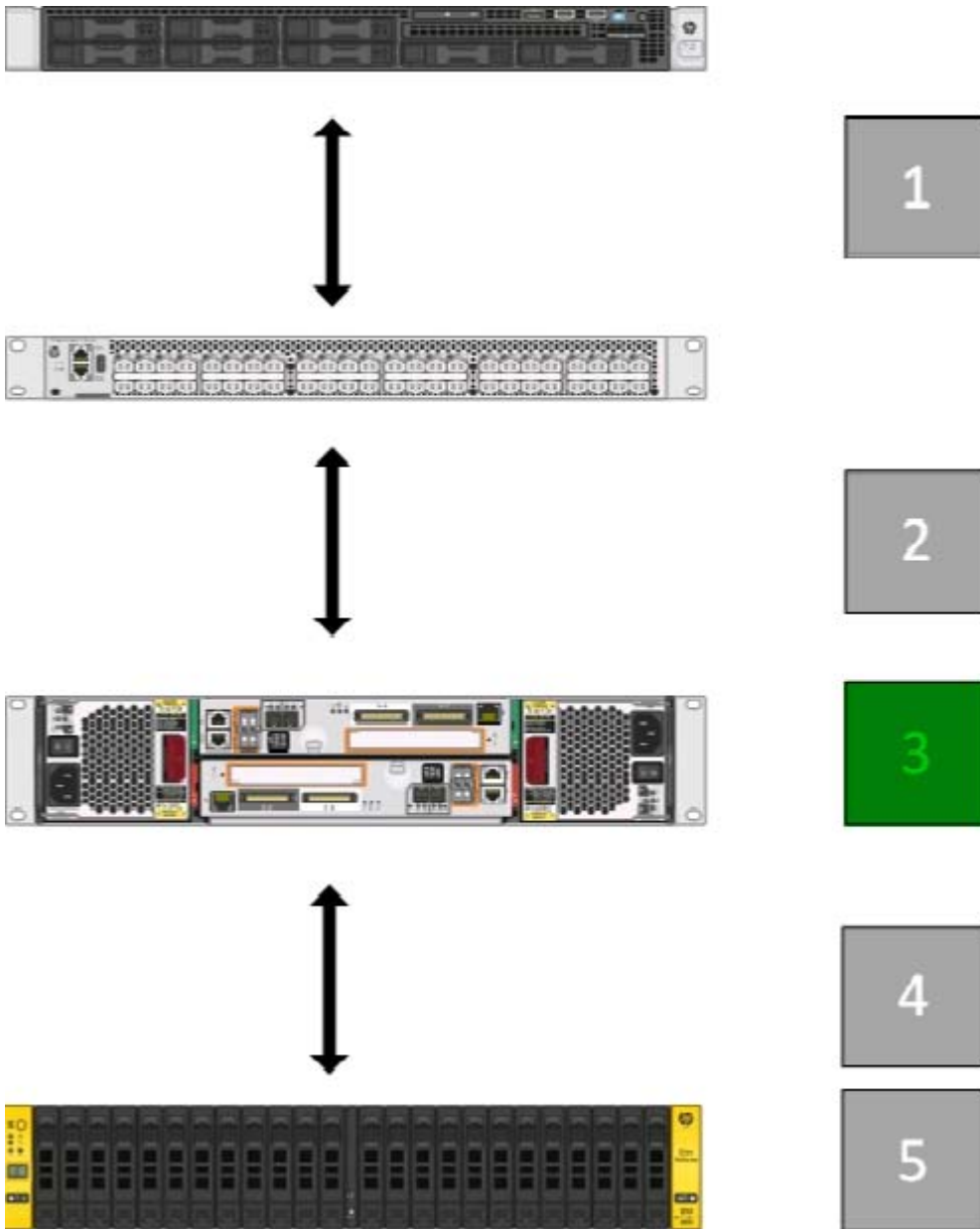
3.HOTSPOT

When using the CLI for performance monitoring on an HPE 3PAR array, for which component in the

datapath would the “stavlun” command give an output? (Click on the correct option.)



Answer:



4.A customer has HPE Data Protector and a StoreOnce VSA at a remote site that must replicate to the corporate data center StoreOnce backup device.

What considerations must be taken into account to allow for Catalyst replication?

- A. Data Protector Catalyst replication will rehydrate the data on the StoreOnce VSA then write to the data center StoreOnce.
- B. Data Protector will write 2 backups: one to the StoreOnce VSA, the other to StoreOnce at the data center.
- C. Data Protector Catalyst replication requires gateways to both sites to use Object copy.
- D. Data Protector Catalyst replication is configured through the replication license on the StoreOnce VSA.

Answer: C

5.HOTSPOT

Click on an available port that can be used to connect an HPE 3PAR StoreServ 8000 to drive enclosures.

(Click on the correct port.)



Answer:



Explanation:

Reference: https://hpe.kx.com.tw/file/repository/a00004511enw_omq99_7yi1ipz.pdf