

# TestHorse

Certified IT practice exam authority

---

Accurate study guides, High passing rate!  
Testhorse provides update free of charge in one year!



**Exam** : **NS0-501**

**Title** : Network Appliance  
Implementation  
Engineer-SAN

**Version** : Demo

1. A company has deployed a NetApp dual controller FAS3100 series with iSCSI. Currently, there are five Windows servers and three Novell NetWare servers connected to the IP SAN. The customer wants to connect an HP-UX server to the IP SAN.

Which cfmode allows all operating systems to co-exist in the IP SAN?

- A.single\_image
- B.standby
- C.cfmode not applicable
- D.dual\_fabric

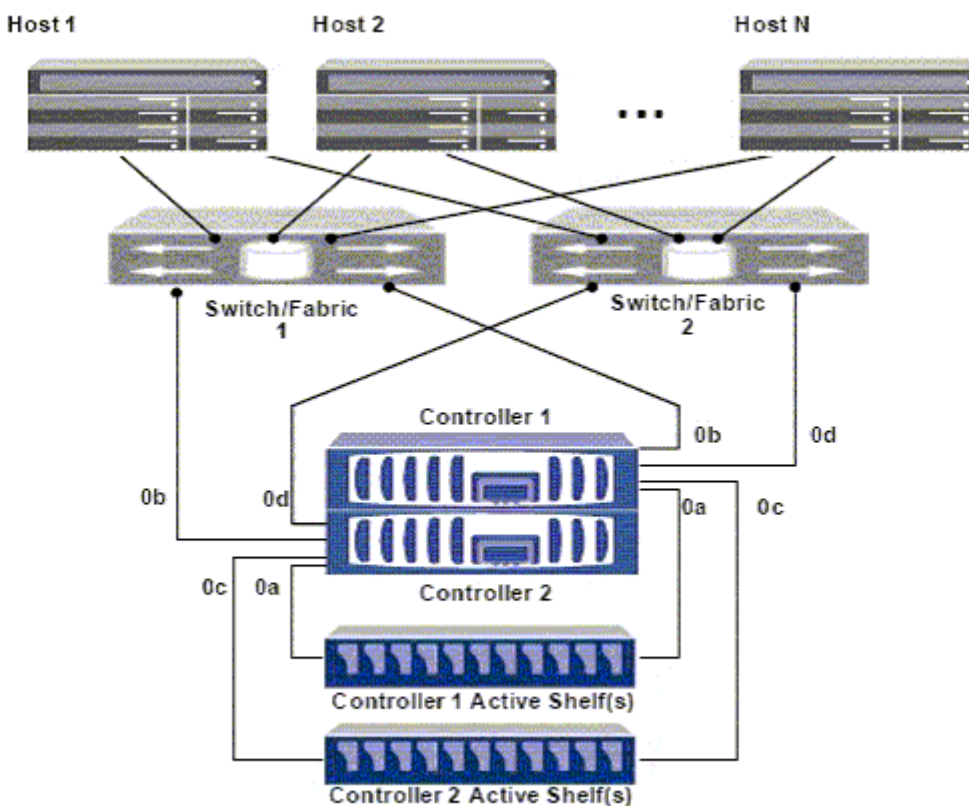
Answer:C

2. Click the Exhibit button.

A Solaris 10 host with VERITAS Storage Foundation 4.1 is FCP attached to a FAS3140 high availability storage system running single image cfmode.

Using the diagram shown, which ports will be considered active by VERITAS DMP using the NetApp ASL to a LUN on controller 1 mapped to host 1?

- A.Port 0b on controller 1 only
- B.Port 0d on controller 1 only
- C.Port 0b and 0d on controller 1 only
- D.Ports 0b and 0d on both controller 1 and controller 2



Answer:C

3. For which four operations would you use igroup throttles on a NetApp storage solution? (Choose four.)

- A.to assign a specific percentage of the queue resources on each physical port to the igroup
- B.to manage pathing to the LUNs
- C.to reserve a minimum percentage of queue resources for a specific igroup
- D.to limit the number of concurrent I/O requests an initiator can send to the storage system
- E.to restrict an igroup to a maximum percentage of use
- F.to manage space reclamation

Answer:ACDE

4. Which command do you use to see the rate of change between two successive Snapshot copies in a flexible volume in Data ONTAP?

- A.snap diff
- B.snap calculate
- C.snap delta
- D.snap space

Answer:C

5. Which utility on Windows 2003 and Windows 2008 can be used to collect information about firmware and driver versions for an Emulex LP1xxxx/LPe1xxx HBA?

- A.EMutil
- B.SANutil
- C.fcp config
- D.SANsurfer
- E.HBAnywhere

Answer:E

6. Which utility on Solaris 10 can be used to collect information about firmware and driver versions for an Emulex LP1xxxx/LPe1xxxx HBA?

- A.EMutil
- B.SANutil
- C.hbainfo
- D.SANsurfer
- E.HBAnywhere

Answer:E

7. Which utility on Solaris 10 can be used to collect information about firmware and driver versions for a Qlogic QLAXxx/QLExxxx HBA?

- A.EMutil

- B.SANutil
- C.cfgadmin
- D.SANsurfer
- E.HBAnywhere

Answer:D

8. An organization currently has a NetApp Fibre Channel block-based solution. With limited budget and resources, they want to create a new disaster recovery site that utilizes a NetApp solution.

What would the optimal solution include?

- A.SnapMover and Fibre Channel at the disaster recovery site for all hosts
- B.SnapMirror and iSCSI at the disaster recovery site for all hosts
- C.Fibre Channel at both locations using ftp to replicate storage
- D.MetroCluster and NAS

Answer:B

9. A company has a Fibre Channel environment and wants to connect a new host in a remote data center using 50/125um OM2 multi-mode fiber cable and needs to support 2 Gb speeds.

What is the maximum distance of the cable run supported in this situation?

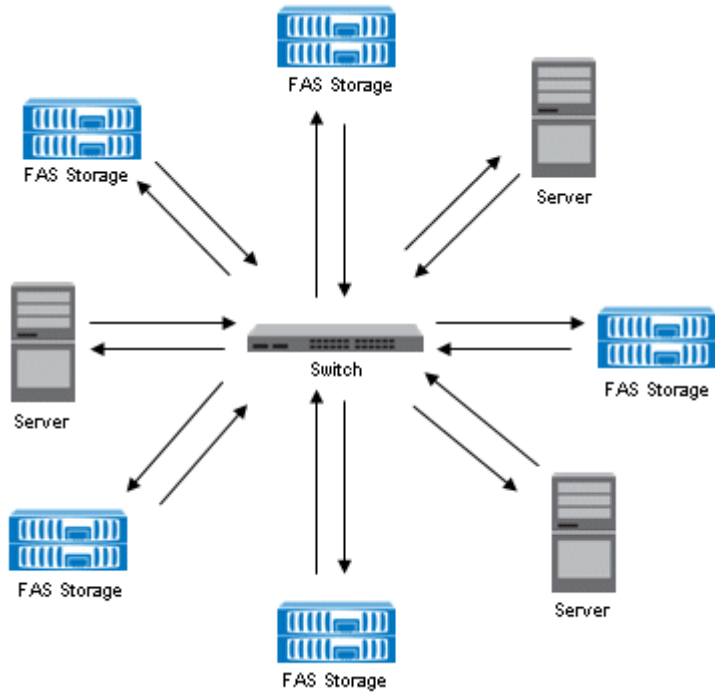
- A.50/125um OM2 multi-mode fiber cable supports up to 500 meters at 2 Gb.
- B.50/125um OM2 multi-mode fiber cable supports up to 10000 meters at 2 Gb.
- C.50/125um OM2 multi-mode fiber cable supports up to 150 meters at 2 Gb.
- D.50/125um OM2 multi-mode fiber cable supports up to 300 meters at 2 Gb.

Answer:D

10. Click the Exhibit button.

Given the information provided in the diagram, what is the appropriate FC topology?

- A.point-to-point
- B.switched fabric
- C.arbitrated loop
- D.ring



Answer:B