

TestHorse

Certified IT practice exam authority

Accurate study guides, High passing rate!
Testhorse provides update free of charge in one year!



Exam : **ST0-099**

Title : Symantec Enterprise Vault
9.0 (STS)

Version : Demo

1.What is the minimum version of the .NET framework required on the Enterprise Vault Server for Symantec Enterprise Vault 9 for Exchange?

- A. .NET 4.0
- B. .NET 3.5 SP1
- C. .NET 1.1 and 2.0
- D. .NET 2.0 and 3.0 SP2

Answer: B

2.Which feature delegation must be set to Read/Write in Internet Information Services (IIS 7.0) before installing Symantec Enterprise Vault 9 for Exchange Outlook Web Access (OWA) Extensions?

- A. .NET Trust Levels
- B. .NET Roles
- C. Failed Request Tracing Rules
- D. IPv4 Address and Domain Restrictions

Answer: D

3.A backup administrator needs to protect the Symantec Enterprise Vault 9 for Exchange server environment. In order to perform a point-in-time recovery of the database, what must be backed up daily?

- A. the EnterpriseVaultDirectory SQL database
- B. the SQL transaction logs
- C. the SQL databases
- D. the EnterpriseVaultAuditing SQL database

Answer: B

4.A backup administrator needs to protect the Symantec Enterprise Vault 9 for Exchange server environment. The administrator has yet to run a backup of the vault store partition. The administrator has Safety Copy enabled for the Vault Store. Given that the administrator has already performed some mailbox archiving, what should occur after running the backup for the first time and clearing the archive bit?

- A. The safety copies are removed from the Exchange store.
- B. The safety copies are removed from the storage queues.
- C. The safety copies are flagged for removal for the next Storage Expiry.
- D. The safety copies are flagged for removal when the services are restarted.

Answer: A

5.A backup administrator needs to protect the Symantec Enterprise Vault 9 for Exchange server environment. On which context menu in the Vault Admin Console does the administrator set and clear the vault store backup mode?

- A. the Enterprise Vault database
- B. the Enterprise Vault services
- C. the Enterprise Vault server
- D. the Enterprise Vault site

Answer: D

6.What are two physical data storage components of Mailbox Archiving in Symantec Enterprise Vault 9 for Exchange? (Select two.)

- A. Indexes
- B. Archives
- C. Vault Store Group
- D. Vault Store Partitions
- E. Enterprise Vault Collector

Answer: A, D

7.Which information is held in the Symantec Enterprise Vault 9 for Exchange (EV 9) Directory Database?

- A. archived items
- B. configuration data for an EV 9 site
- C. configuration information of indexed data
- D. storage location of single instanced items

Answer: B

8.An administrator is installing Symantec Enterprise Vault 9 for Exchange (EV 9). Where should the administrator place the EV 9 databases and log files?

- A. in the installation directory of the SQL server
- B. on separate physical disks of the EV server
- C. on separate physical disks of the SQL server
- D. on direct attached storage of the EV server

Answer: C

9.A large enterprise organization requires Enterprise Vault Operations Manager. The company will have five Symantec Enterprise Vault 9 for Exchange (EV 9) sites and three EV Directories. How many monitoring databases should be planned?

- A. 1
- B. 3
- C. 5
- D. 8

Answer: B

10.Provided that appropriate options are set for users, which two actions can users perform on the Details tab of the Vault Cache Properties dialog box? (Select two.)

- A. view header and content synchronization status
- B. start synchronization
- C. disable synchronization
- D. reverse synchronization
- E. edit header and content synchronization categories

Answer: A, B

11.An administrator is setting up Exchange managed folders and needs to apply the same retention settings to Symantec Enterprise Vault 9 for Exchange (EV 9). Which action needs to happen to force EV 9

to synchronize the managed folder retentions?

- A. in Desktop Folder policy, advanced settings, change the Archived Exchanged Managed Folders to Normal
- B. in Desktop policy, advanced settings, change the Archived Exchanged Managed Folders to Managed
- C. in Mailbox policy, advanced settings, change the Archived Exchanged Managed Folders to Managed
- D. in Mailbox policy, advanced settings, change the Archived Exchanged Managed Folders to Normal

Answer: C

12. An organization enables Outlook Anywhere (RPC over HTTP) for mobile users so users can retrieve archived email through Outlook without being connected to a VPN. When end users who use this new functionality try to restore an item, they are no longer prompted for where they want the item to be restored. What is the reason for this change in behavior?

- A. The system administrator has disabled custom restore locations in the policy.
- B. The Symantec Enterprise Vault 9 for Exchange Outlook Add-In is using HTTP-only functionality.
- C. The policy RPC over HTTP Restrictions is set to Disable User Extensions.
- D. The policy RPC over HTTP Restrictions is set to Disable Offline Vault.

Answer: B

13. An organization is debating which Symantec Enterprise Vault 9 for Exchange Outlook client to deploy to end users. Which two features can be used if the HTTP-only Outlook Add-In is deployed? (Select two.)

- A. Users can choose which archives to store items in.
- B. Users can restore items to the Restored Items folder.
- C. Users can use Vault Cache.
- D. Users can cancel Pending Items.
- E. Users can store and classify items with retention categories.

Answer: C, D

14. A company is considering Symantec Enterprise Vault 9 for Exchange for archiving their Exchange systems. Personnel at the company are having trouble understanding the differences between their existing backup environment and a separate archiving environment. Which two differentiate archiving from a backup system? (Select two.)

- A. provides retention periods for individual sets of data
- B. requires operator intervention to perform a data restore request
- C. provides duplicate copies for disaster recovery purposes
- D. ingests data from the Exchange store to the archive storage layer
- E. enables fast restore capabilities for mission critical data

Answer: A, D

15. What are two benefits of enabling Symantec Enterprise Vault 9 for Exchange (EV 9) for Outlook Web Access users? (Select two.)

- A. offloads Archiving Task from EV 9 server
- B. provides remote access to multiple user archives
- C. enables remote access to archived public folder items
- D. extracts mail from the Exchange Server

E. runs independent of EV 9 services

Answer: B, C

16.Symantec Enterprise Vault 9 for Exchange converts mail message attachments to text or HTML. What is a benefit of changing the default conversion type to text instead of HTML for certain document types

- A. increases the performance of file conversion
- B. allows for the support of additional document types
- C. increases the performance of searching
- D. significantly reduces the amount of space taken by indexing

Answer: A

17.An administrator needs to migrate a large number of PST files located in users' Outlook profiles and on a shared drive. Which two PST migration methods will accomplish this? (Select two.)

- A. Client-Driven Migration
- B. Server-Driven Migration
- C. PST Migration Wizard
- D. Locate-Migrate Wizard
- E. Automatic Migration

Answer: A, B

18.An organization needs to move all PST files into Symantec Enterprise Vault 9 for Exchange (EV 9). Their users require constant access to their PST files during the migration. What is the recommended migration method?

- A. Client-Driven PST Migration
- B. Locate and Migrate PST Migration
- C. PST Migration Wizard
- D. EVPM Scripted Migration

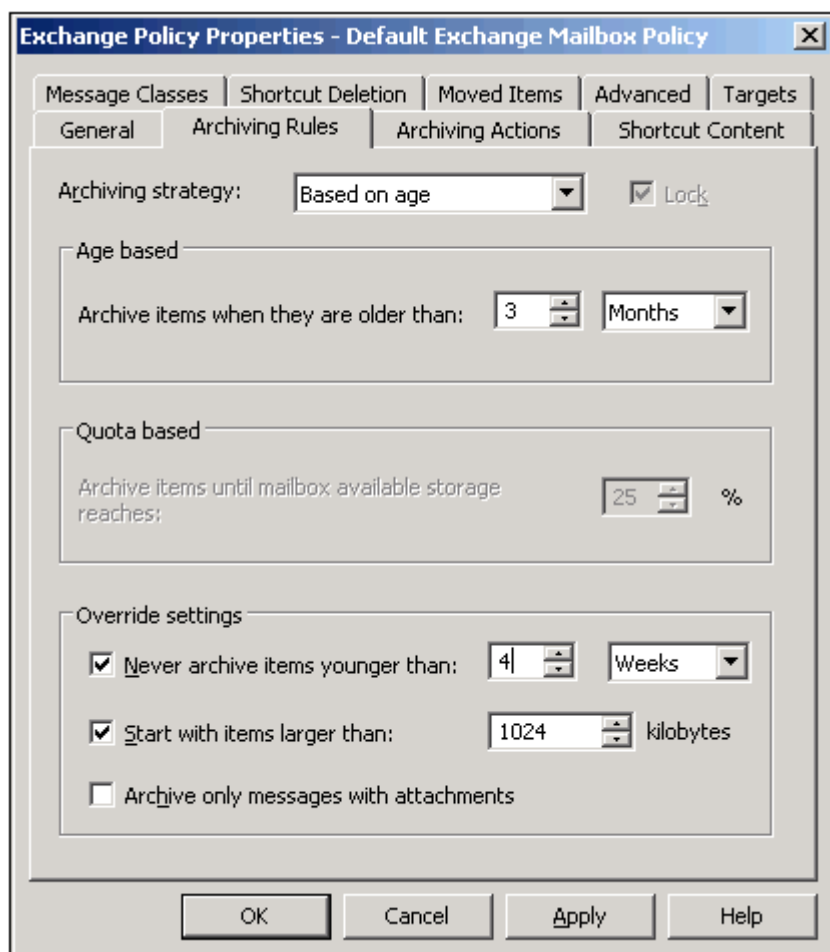
Answer: A

19.Which task needs to be running for a PST Client-Driven Migration to be successful?

- A. PST Client Task
- B. PST Locator Task
- C. PST Migrator Task
- D. PST Collector Task

Answer: C

20.Refer to the exhibit.



On the Exchange Policy Properties page, which two items will be archived using the policy shown in the exhibit? (Select two.)

- A. all items older than four weeks
- B. all items larger than 1 MB
- C. all items older than four weeks and larger than 1 MB
- D. all items older than three months
- E. all items older than four weeks and smaller than 1 MB

Answer: C, D